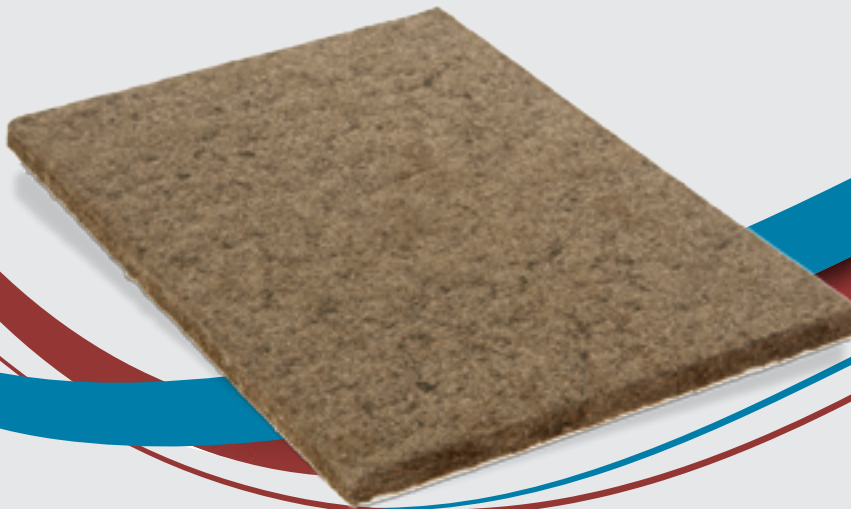


# BITUMEN IMPREGNATED WOOD FIBER FILLERS & PROTECTION BOARDS



## PRODUCT DESCRIPTION

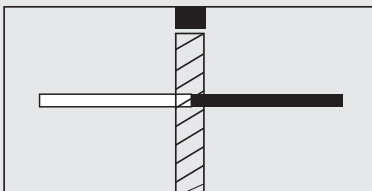
UNITECH Filler Boards is manufactured from highly resilient softwood fibers coated with bitumen. Filler Boards are dry and clean, and cannot extrude any form of staining matter. They are resistant to moisture penetration and ice formation in the joint. They are immune to dry and wet rot, fungus and most forms of insect attack or similar forms of deterioration.

They completely fills joints under repeated cycles of expansion and contraction with minimum extrusion. They are also a good insulating vapor barrier which is easily handled without breakage.

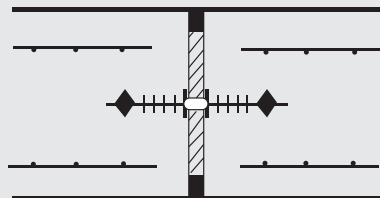


## BASIC USE

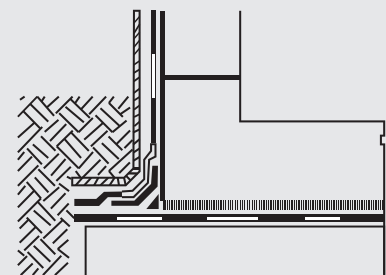
UNITECH Filler Boards are designed as a standard, Low cost, pre-moulded joint filler for expansion joints in civil engineering and building construction works of all types. The main uses for Bituboard in the construction industry are: roads, bridges, runways, pedestrian areas, basements, retaining walls and site slabs.



Expansion Joint Concrete Slabs



Expansion Joint in Vertical Walls



Protection to Waterproofing Membranes

## PROTECTION WORK

UNITECH Filler Boards are recommended for the protection of different materials, particularly waterproofing below-grade where abrasive and sharp backfill material could puncture or otherwise damage the waterproofing.



# BITUMEN IMPREGNATED WOOD FIBER FILLERS & PROTECTION BOARDS

## TECHNICAL SPECIFICATIONS

Specification	Unit of Measurement	Value for Nominal Thickness in mm			
		9.5 & 10	12 & 12.5	18 - 20	24 - 25
Density of dry board	kg/m <sup>3</sup> lb/ft <sup>3</sup>	296 18.5	28.1 17.5	252 15.7	262 16.3
2h volume water absorption	%	4.1	3.4	1.9	1.6
24h volume water absorption	%	20	18	8	7
Moisture content	%	5.4	5.2	5.7	5.3
Asphalt content	%	10	10	10	10
Linear variation with change in moisture content	%	0.13	0.11	0.11	0.10
Compression	mm in	0.21 0.008	0.48 0.019	0.38 0.015	0.47 0.018

\* 20% Bitumen content is also available

\* 35% Bitumen content is also available

## TYPICAL PERFORMANCE CHARACTERISTICS

Properties	Test Method
Extrusion under Compression	<1mm
Application Temperature	-25°C to 80°C
Weather Resistance	-40°C to 130°C under normal usage
Shelf Period	> 2 years
Storage Requirements	Store flat, preferably under cover
Flash Point	>200°C
Flammability	Will burn slowly, does not support spread of flames
Toxicity	Non toxic under normal conditions of use
Chemical Resistance	Dilute acids -Excellent Dilute alkalis -Excellent Aliphatic hydrocarbons -Fair Aromatic hydrocarbons -Fair Chlorinated solvents -Fair Salt solutions -Excellent Detergent solutions -Excellent Water -Excellent
Shrinkage Factor	<0.5%
Specification Compliance	ASTM D IS175-83 & BS 1142:1989 AASHTO M 213 Corps of Engineers CRD-C 508 Federal Specification HH-F-341 F, type I

**LOCATION**

