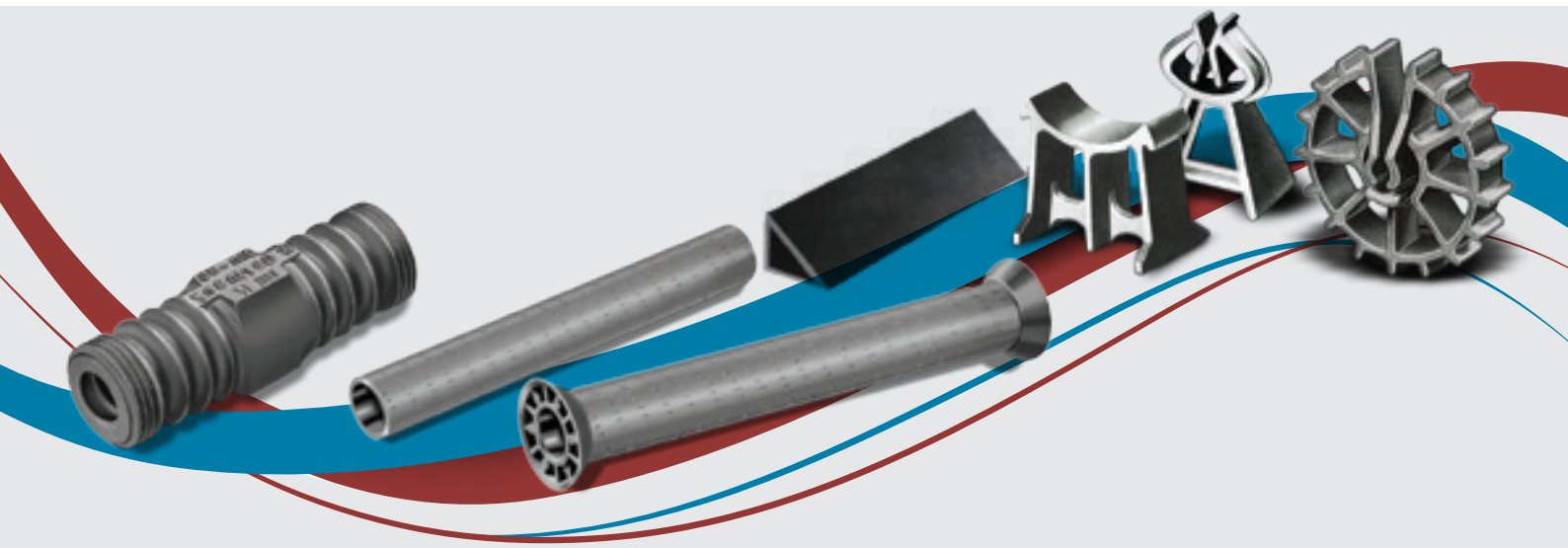


CHAMFERS AND BARRIERS



WATER STOPPERS OR BARRIERS / SW 36

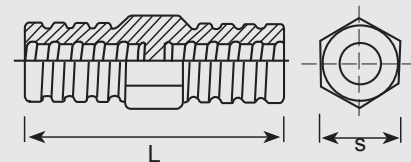
This malleable cast iron - Grade BM 30- 06 Grey iron part is used together with tie rods DG 15/17 for the construction of watertight concrete walls. It is very often the case that customers demand the tie rods to be connected up to a so-called waterstop in the middle of the wall.

Zinc plated.

Hex size s= 36 mm.

| Code | Size L x S | Permissible Load (KN) |
|------------------|------------------|-----------------------|
| UC-0180-C-SWB116 | DG15/17 x 116 mm | 80-90 KN |

These systems are used for basement walls or tanks where a watertight structure is required. After the concrete has cured the bars are unscrewed from the watertight coupling, formwork cones removed and the holes are then grouted with mortar or injected with polyester resin.



PVC TUBES - THRUTY SLEEVES

Rigid PVC tube, supplied in length of 2 m, which can be easily cut to size on site. To be used as an expandable sleeve over tie-rods, facilitating their removal and also acting as a spacer to give correct shutter position. Tubes allow the recovery of the tie rods by preventing contact with the concrete. Length to be cut depends on wall thickness.

(length= wall thickness minus 2 cm)



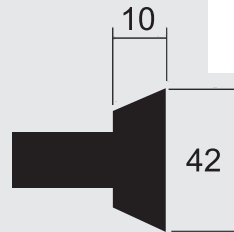
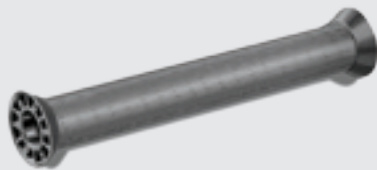
| Code | Inner Diameter (mm) | Outer Diameter (mm) | Length (mm) |
|-----------------|---------------------|---------------------|-------------|
| UC-200-C-PVT222 | 22 | 26 | 2000 |

CHAMFERS AND BARRIERS

PVC THRUTY CONES

Thruty cones used at the ends of thruty sleeves and can be easily extracted after removal of the formwork, to form a chamfered recess for subsequent grouting.

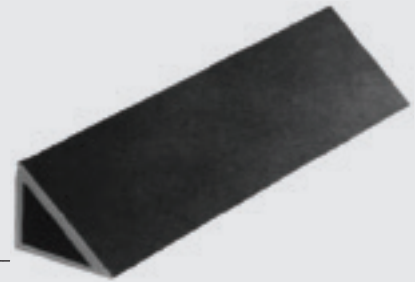
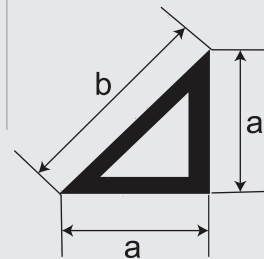
| Code | For Sleeve Inner (mm) | Recess Depth (mm) |
|------------------|-----------------------|-------------------|
| UC-0190-C-PVCN22 | 22 | 10 |



PVC CHAMFER STRIPS

PVC profiles suitable for forming chamfered corners to columns and beams. Chamfers are re-usable.

| Code | Dimension A x Length |
|------------------|----------------------|
| UC-0020-C-PCH102 | 10 mm x 2 LM |
| UC-0030-C-PCH152 | 15 mm x 2 LM |
| UC-0040-C-PCH202 | 20 mm x 2 LM |
| UC-0050-C-PCH252 | 25 mm x 2 LM |
| UC-0060-C-PCH302 | 30 mm x 2 LM |



PVC CHAIR SPACER

This spacer is the most popular spacer for horizontal placed reinforcement in slabs and beams. It has good stability and can be used with various bar diameters due to its concave seat. Designed for light reinforcement in slabs and beams.

| Code | Size |
|------------------|-------|
| UC-0510-C-PCHS25 | 25 mm |
| UC-0520-C-PCHS30 | 30 mm |
| UC-0530-C-PCHS40 | 40 mm |
| UC-0540-C-PCHS50 | 50 mm |



CHAMFERS AND BARRIERS

PVC CLIP SPACER

| Code | Size |
|------------------|-------|
| UC-0610-C-PCLS25 | 25 mm |
| UC-0620-C-PCLS30 | 30 mm |
| UC-0630-C-PCLS40 | 40 mm |
| UC-0640-C-PCLS50 | 50 mm |
| UC-0650-C-PLSS75 | 75 mm |



PVC WHEEL SPACER

Wheel spacers for universal use. Clamping retention lugs for different steel diameters. Extra-wide support area reduces possibility of tipping over. Open style design does not interrupt concrete flow. External ribs for minimal formwork contact.

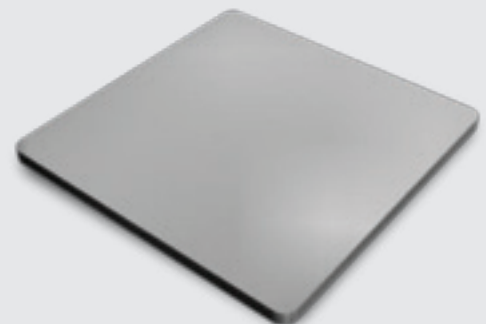
| Code | Size |
|------------------|-------|
| UC-0610-C-PWLS20 | 20 mm |
| UC-0620-C-PWLS25 | 25 mm |
| UC-0630-C-PWLS30 | 30 mm |
| UC-0640-C-PWLS40 | 40 mm |
| UC-0640-C-PWLS50 | 50 mm |
| UC-0660-C-PWLS75 | 75 mm |



SHIM PAD

For assembling precast concrete parts and facade elements.

| Code | Thickness | Size |
|------------------|-----------|-----------------|
| UC-0330-C-PSHM02 | 2 mm | 70 x 70 x 2 mm |
| UC-0340-C-PSHM03 | 3 mm | 70 x 70 x 3 mm |
| UC-0350-C-PSHM04 | 5 mm | 70 x 70 x 5 mm |
| UC-0370-C-PSHM10 | 10 mm | 70 x 70 x 10 mm |



LOCATION

